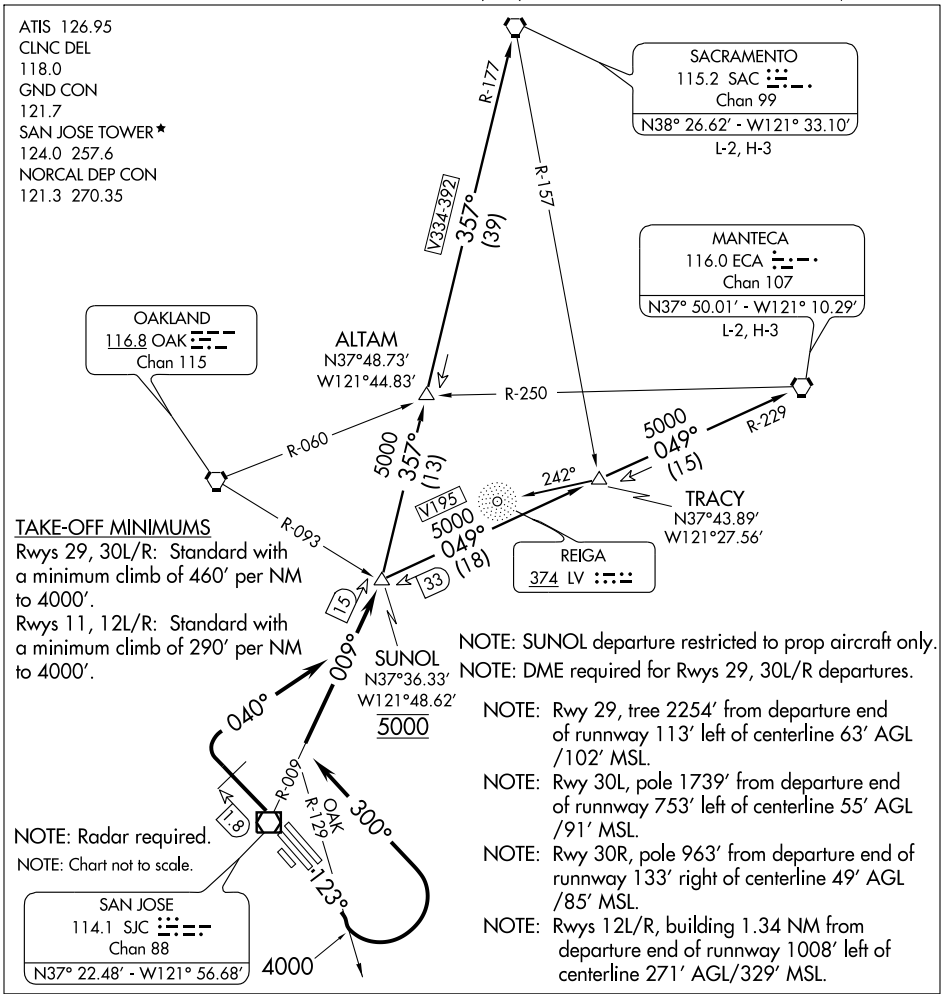


(SUNOL6.SUNOL) 05244
SUNOL SIX DEPARTURE

SAN JOSE/ NORMAN Y. MINETA SAN JOSE INTL (SJC)
SL-693 (FAA) SAN JOSE, CALIFORNIA



DEPARTURE ROUTE DESCRIPTION

TAKE-OFF RUNWAYS 11, 12L/R: Climb via heading 123° to intercept and proceed via OAK R-129 to 4000. Then turn left heading 300° for radar vectors to intercept and proceed via SJC R-009 to SUNOL INT. Thence....

TAKE-OFF RUNWAYS 29, 30L/R: Climb runway heading at SJC 1.8 DME northwest of SJC VOR/DME, turn right heading 040° to intercept and proceed via SJC R-009 to SUNOL INT. Thence....

...Cross SUNOL INT at 5000', then via (transition) or (assigned route).

MANTECA TRANSITION (SUNOL6.ECA): From over SUNOL INT via ECA R-229 to ECA VORTAC.

SACRAMENTO TRANSITION (SUNOL6.SAC): From over SUNOL INT via SAC R-177 to SAC VORTAC.

SW-2, 06 JUL 2006 to 03 AUG 2006

SW-2, 06 JUL 2006 to 03 AUG 2006